

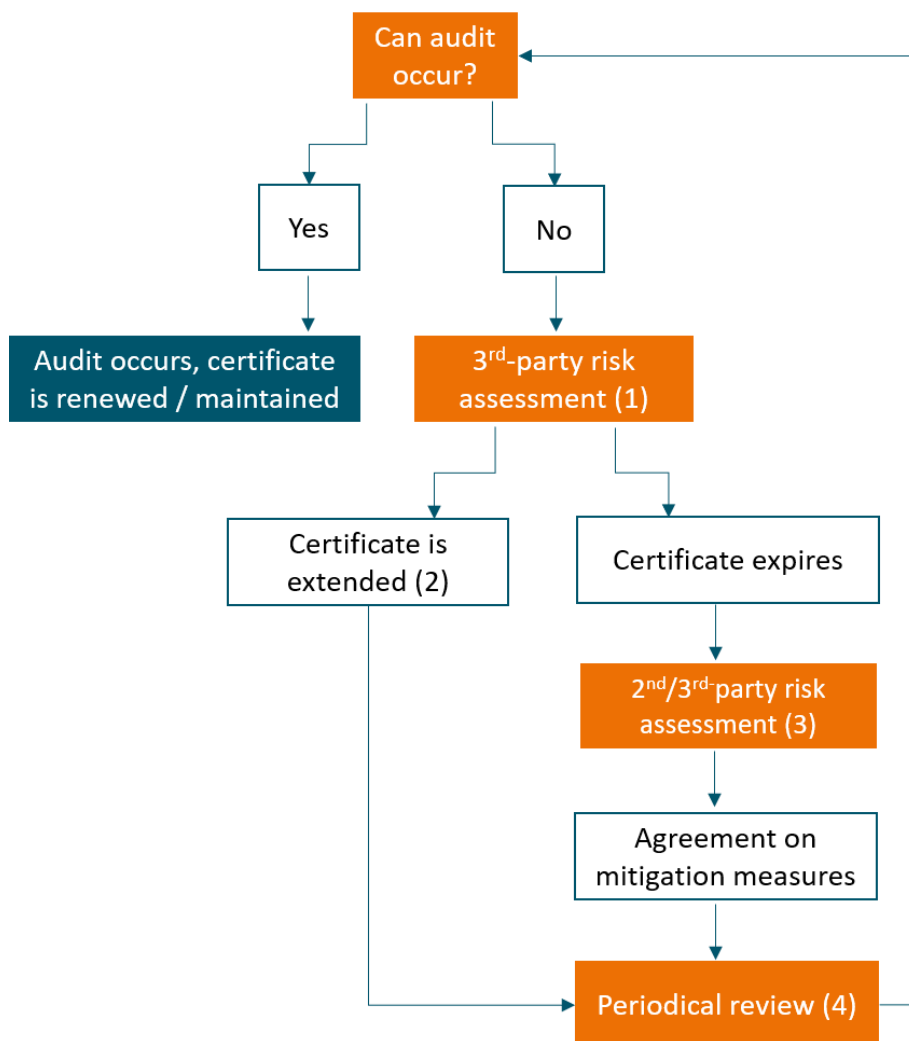
GFSI Position for Harmonised Risk Assessment

This position was issued to support businesses during the COVID19 position and should be read along [this news item](#).

1. Historical information related to the **supplier**
 - History of the supplier in relation to their certification status:
 - How long have they maintained certification?
 - What were the ratings (if available) of those certificates?
 - What did the last audit report contain? How many and what types of non-conformances were raised during the last audit?
 - History of the site with your own company:
 - How long has this site been supplying you?
 - What were the outcomes of any visits you carried out at this supplier's facility(ies)?
 - History of their products with your own company:
 - What have been the results of their and your own product surveillance on food safety criteria?
 - What product or process food safety incidents, if any, have you had with them? When was the last incident?
2. Historical information related to the **product category** itself
 - Based on your own information:
 - How do you classify this product category in your own company (high, medium or low risk)? This may depend on how this type of product is expected to be consumed and its propensity to contamination leading to food poisoning.
 - What has the trend of food safety incidents and complaints been in this product category recently?
 - Referring to international / regulatory information on product incidents and classification
 - [U.S. Centers for Disease Control and Prevention National Outbreak Reporting System](#) (NORS)
 - [EU Rapid Alerts System for Food and Feed](#)
 - [FDA's Draft Approach for Designating High-Risk Foods as Required by Section 204 of FSMA](#)
 - Other reliable sources of information on foodborne illness outbreaks and product rejections (e.g. government agencies, international organisations such as WHO, FAO, etc.).
3. Insight into the **current situation of the supplier**
 - What are the circumstances under which their certificate has lapsed?
 - What is their next opportunity and what are their plans to be audited according to the GFSI-recognised process?
 - What (internal, second-party or third-party) assessments have they completed or been subjected to, the outcome of which they may be able to share with you?
 - What is the current performance of their CCPs and OPRPs?
 - What impact has the pandemic had on their supply chain or site operations? What mitigation measures have they taken?

- Since their last audit, in particular since they started being impacted by the pandemic, what changes, if any, have been made to their: processes, product and formulation, product portfolio, personnel, plant, raw materials, raw material sources, HACCP or procedures?
- What is the status of their internal audits and corrective action plan?
- How are they preventing the introduction of potential new hazards brought by the current situation?
- Will some of the processes or products need to be subcontracted or moved to an alternative manufacturing or distribution facility? If so, how are the other sites activities evaluated and controlled?
- What second or third-party assessments have they been asked to complete to maintain their supply (e.g. remote assessment, self-assessment, etc.?)

Image: Decision tree for managing the impact of the COVID19 pandemic on audits and certification



- (1) Risk assessment provided by GFSI-recognised CPOs, applied by CBs
- (2) Duration of extension set by [GFSI position](#)
- (3) The certified organisation and their customers agree; this may be conducted by third party and supported by third-party tools.
- (4) Period of validity of the risk assessment to be agreed between the organisation being risk-assessed and their customer(s).